

| BEWEGUNGEN/MOUVEMENTS | 05/2013 | 05/2012 | Diff | % |
|---|-------------|-------------|-------------|-------------|
| 1- Linienflüge/Lignes régulières | 5184 | 4814 | 370 | 8 % |
| 2- Nicht-Linienflüge/Lignes non régulières | 246 | 301 | -55 | -18 % |
| 3- Fracht/fret (cargo+express) | 333 | 337 | -4 | -1 % |
| 4- Taxiflüge/Vols taxi | 376 | 360 | 16 | 4 % |
| 5- Allgem. Verkehr und anderer nicht gew. Verkehr/Aviation générale et autre trafic non comm. | 1568 | 2044 | -476 | -23 % |
| TOTAL BEWEGUNGEN/MOUVEMENTS | 7707 | 7856 | -149 | -2 % |

| Kumul./2013 | Cumul 2012 | Diff | % |
|--------------|--------------|-------------|-------------|
| 22135 | 21898 | 237 | 1 % |
| 1010 | 1185 | -175 | -15 % |
| 1613 | 1702 | -89 | -5 % |
| 1725 | 1645 | 80 | 5 % |
| 8335 | 9024 | -689 | -8 % |
| 34818 | 35454 | -636 | -2 % |

| PASSAGIERE/PASSAGERS | | 05/2013 | 05/2012 | Diff | % |
|---|--------------------|---------------|---------------|--------------|--------------|
| 1- Linienflüge/Lignes régulières | Lokal/Locaux | 519757 | 445228 | 74529 | 17 % |
| | Transfer/Transfert | 3265 | 4967 | -1702 | -34 % |
| | Transit | 251 | 705 | -454 | -64 % |
| | Total: | 523273 | 450900 | 72373 | 16 % |
| 2- Nicht-Linienflüge/Lignes non régulières | Lokal/Locaux | 18986 | 26740 | -7754 | -29 % |
| | Transit | 1581 | 1260 | 321 | 25 % |
| | Total: | 20567 | 28000 | -7433 | -27 % |
| 3- Taxiflüge/Vols taxi | Lokal/Locaux | 418 | 217 | 201 | 93 % |
| | Transit | 3 | | 3 | |
| | Total: | 421 | 217 | 204 | 94 % |
| TOTAL | Total: | 544261 | 479117 | 65144 | 14 % |
| 4- Allgem. Verkehr und anderer nicht gew. Verkehr/Aviation générale et autre trafic non comm. | Lokal/Locaux | 383 | 490 | -107 | -22 % |
| | Transit | 7 | 1 | 6 | 600 % |
| | Total: | 390 | 491 | -101 | -21 % |
| TOTAL | Total: | 390 | 491 | -101 | -21 % |
| TOTAL PASSAGIERE/PASSAGERS | | 544651 | 479608 | 65043 | 14 % |

| Kumul./2013 | Cumul 2012 | Diff | % |
|----------------|----------------|---------------|--------------|
| 2083116 | 1865837 | 217279 | 12 % |
| 16993 | 27163 | -10170 | -37 % |
| 623 | 1035 | -412 | -40 % |
| 2100732 | 1894035 | 206697 | 11 % |
| 71784 | 83067 | -11283 | -14 % |
| 7691 | 6266 | 1425 | 23 % |
| 79475 | 89333 | -9858 | -11 % |
| 1511 | 1163 | 348 | 30 % |
| 8 | 4 | 4 | 100 % |
| 1519 | 1167 | 352 | 30 % |
| 2181726 | 1984535 | 197191 | 10 % |
| 1934 | 2057 | -123 | -6 % |
| 30 | 26 | 4 | 15 % |
| 1964 | 2083 | -119 | -6 % |
| 1964 | 2083 | -119 | -6 % |
| 2183690 | 1986618 | 197072 | 10 % |

| LUFTFRACHT - POST/FRET AVIONNE - POSTE | | 05/2013 | 05/2012 | Diff | % |
|--|--------------|-------------|-------------|-----------|------------|
| | Express | 2782 | 2853 | -71 | -2 % |
| | Fracht/Cargo | 486 | 335 | 151 | 45 % |
| TOTAL | | 3268 | 3188 | 80 | 3 % |

| Kumul./2013 | Cumul 2012 | Diff | % |
|--------------|--------------|------------|------------|
| 13511 | 13625 | -114 | -1 % |
| 2611 | 2370 | 241 | 10 % |
| 16122 | 15995 | 127 | 1 % |

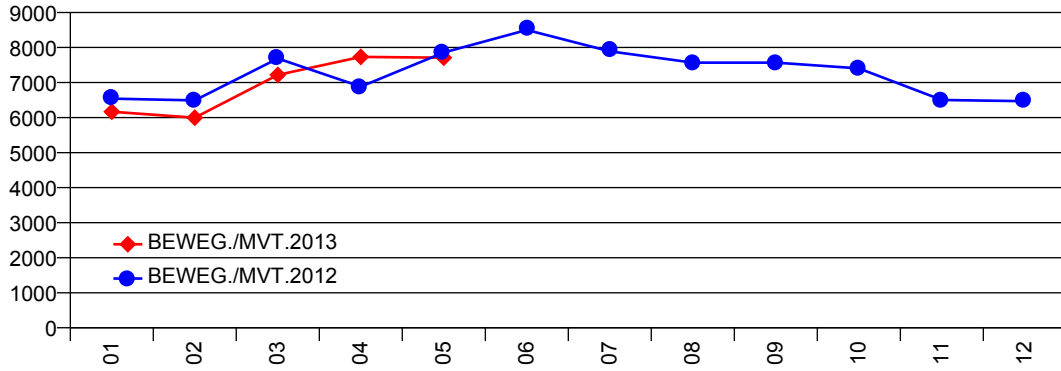
| LKW FRACHT/FRET CAMIONNE | | 05/2013 | 05/2012 | Diff | % |
|---------------------------------------|---------------|-------------|-------------|-----------|------------|
| | Import | 1369 | 1312 | 57 | 4 % |
| | Export | 3144 | 3191 | -47 | -1 % |
| TOTAL LKW FRACHT/FRET CAMIONNE | Total: | 4513 | 4503 | 11 | 0 % |

| Kumul./2013 | Cumul 2012 | Diff | % |
|--------------|--------------|-------------|-------------|
| 6581 | 6907 | -326 | -5 % |
| 15430 | 15717 | -287 | -2 % |
| 22011 | 22624 | -613 | -3 % |

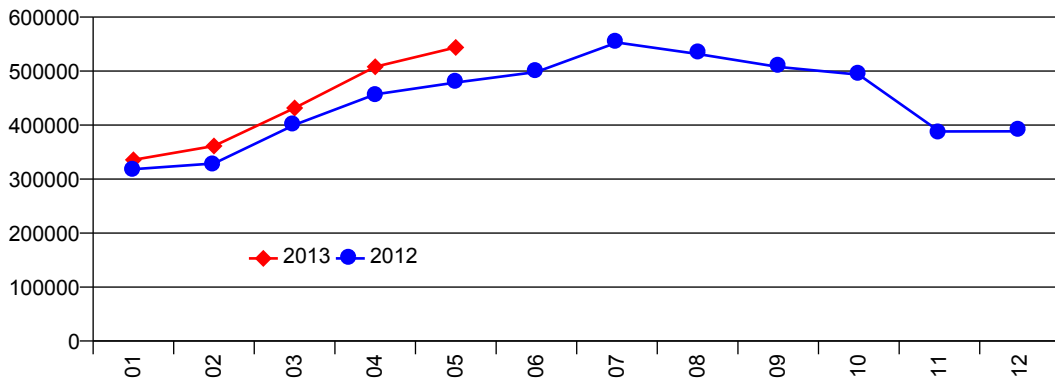
| | 05/2013 | 05/2012 | Diff | % |
|--------------------------|-------------|-------------|-----------|------------|
| TOTAL FRACHT/FRET | 7782 | 7691 | 91 | 1 % |

| Kumul./2013 | Cumul 2012 | Diff | % |
|--------------|--------------|-------------|-------------|
| 38133 | 38619 | -486 | -1 % |

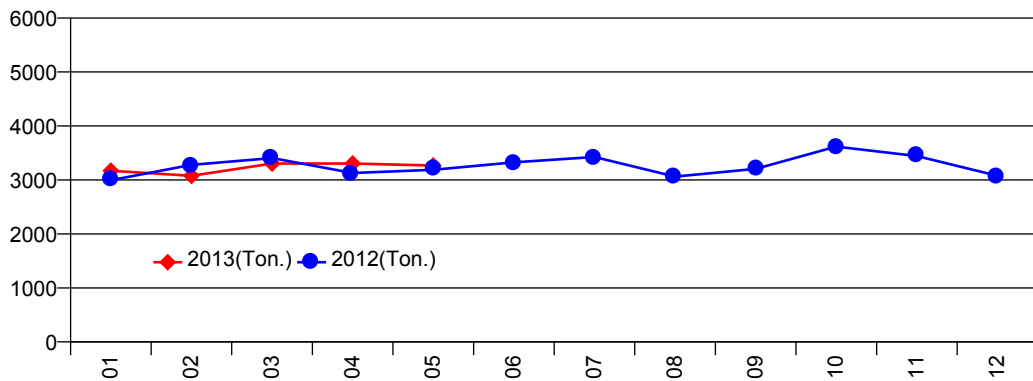
Bewegungen/Mouvements-Total



Passagiere/Passagers-Total



Luftfracht/Fret avionné-Total



LKW Fracht/Fret camionné-Total

