

| BEWEGUNGEN/MOUVEMENTS | 03/2008 | 03/2007 | Diff | % |
|---|-------------|-------------|-------------|-------------|
| 1- Linienflüge/Lignes régulières | 4004 | 4219 | -215 | -5 % |
| 2- Nicht-Linienflüge/Lignes non régulières | 203 | 235 | -32 | -14 % |
| 3- Fracht/fret (cargo+express) | 296 | 324 | -28 | -9 % |
| 4- Taxiflüge/Vols taxi | 372 | 382 | -10 | -3 % |
| 5- Allgem. Verkehr und anderer nicht gew. Verkehr/Aviation générale et autre trafic non comm. | 1388 | 1632 | -244 | -15 % |
| TOTAL BEWEGUNGEN/MOUVEMENTS | 6263 | 6792 | -529 | -8 % |

| Kumul./2008 | Cumul 2007 | Diff | % |
|--------------|--------------|------------|------------|
| 11561 | 11756 | -195 | -2 % |
| 534 | 625 | -91 | -15 % |
| 891 | 903 | -12 | -1 % |
| 1060 | 1034 | 26 | 3 % |
| 4706 | 4146 | 560 | 14 % |
| 18752 | 18464 | 288 | 2 % |

| PASSAGIERE/PASSAGERS | | 03/2008 | 03/2007 | Diff | % |
|---|--------------------|---------------|---------------|---------------|--------------|
| 1- Linienflüge/Lignes régulières | Lokal/Locaux | 298718 | 311050 | -12332 | -4 % |
| | Transfer/Transfert | 1919 | 2551 | -632 | -25 % |
| | Transit | 606 | 130 | 476 | 366 % |
| | Total: | 301243 | 313731 | -12488 | -4 % |
| 2- Nicht-Linienflüge/Lignes non régulières | Lokal/Locaux | 14967 | 20829 | -5862 | -28 % |
| | Transit | 1672 | 2925 | -1253 | -43 % |
| | Total: | 16639 | 23754 | -7115 | -30 % |
| 3- Taxiflüge/Vols taxi | Lokal/Locaux | 514 | 345 | 169 | 49 % |
| | Transit | 7 | 3 | 4 | 133 % |
| | Total: | 521 | 348 | 173 | 50 % |
| TOTAL | Total: | 318403 | 337833 | -19430 | -6 % |
| 4- Allgem. Verkehr und anderer nicht gew. Verkehr/Aviation générale et autre trafic non comm. | Lokal/Locaux | 191 | 308 | -117 | -38 % |
| | Transit | 15 | 1 | 14 | 1400 % |
| | Total: | 206 | 309 | -103 | -33 % |
| TOTAL | Total: | 206 | 309 | -103 | -33 % |
| TOTAL PASSAGIERE/PASSAGERS | | 318609 | 338142 | -19533 | -6 % |

| Kumul./2008 | Cumul 2007 | Diff | % |
|---------------|---------------|---------------|--------------|
| 793984 | 826750 | -32766 | -4 % |
| 5172 | 5458 | -286 | -5 % |
| 1085 | 882 | 203 | 23 % |
| 800241 | 833090 | -32849 | -4 % |
| 39848 | 51093 | -11245 | -22 % |
| 3466 | 7905 | -4439 | -56 % |
| 43314 | 58998 | -15684 | -27 % |
| 965 | 1242 | -277 | -22 % |
| 11 | 80 | -69 | -86 % |
| 976 | 1322 | -346 | -26 % |
| 844531 | 893410 | -48879 | -5 % |
| 756 | 762 | -6 | -1 % |
| 19 | 2 | 17 | 850 % |
| 775 | 764 | 11 | 1 % |
| 775 | 764 | 11 | 1 % |
| 845306 | 894174 | -48868 | -5 % |

| LUFTFRACHT - POST/FRET AVIONNE - POSTE | | 03/2008 | 03/2007 | Diff | % |
|--|--------------|-------------|-------------|-------------|--------------|
| | Express | 2367 | 2553 | -186 | -7 % |
| | Fracht/Cargo | 1022 | 1516 | -494 | -33 % |
| TOTAL | | 3389 | 4069 | -680 | -17 % |

| Kumul./2008 | Cumul 2007 | Diff | % |
|-------------|--------------|--------------|--------------|
| 7112 | 7029 | 83 | 1 % |
| 2479 | 3914 | -1435 | -37 % |
| 9591 | 10943 | -1352 | -12 % |

| LKW FRACHT/FRET CAMIONNE | | 03/2008 | 03/2007 | Diff | % |
|---------------------------------------|---------------|-------------|-------------|------------|-------------|
| | Import | 2150 | 1794 | 356 | 20 % |
| | Export | 3503 | 3353 | 150 | 4 % |
| TOTAL LKW FRACHT/FRET CAMIONNE | Total: | 5654 | 5147 | 506 | 10 % |

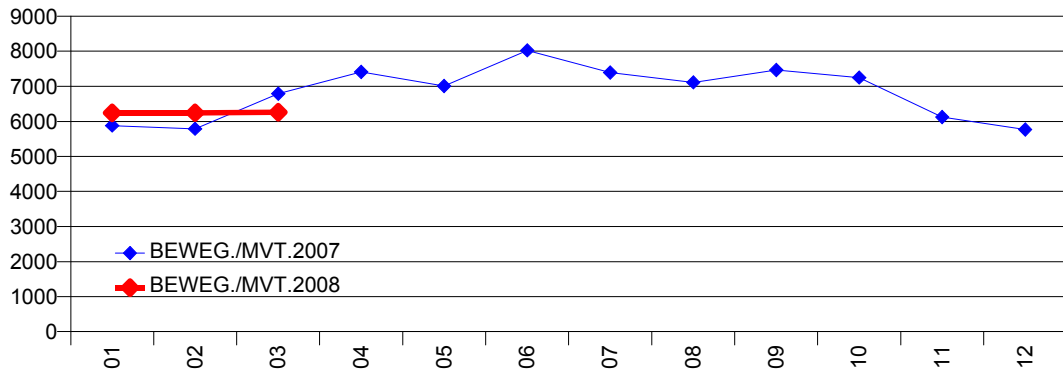
| Kumul./2008 | Cumul 2007 | Diff | % |
|--------------|--------------|-------------|-------------|
| 5714 | 5294 | 420 | 8 % |
| 10693 | 9474 | 1219 | 13 % |
| 16407 | 14768 | 1639 | 11 % |

| TOTAL FRACHT/FRET | | 03/2008 | 03/2007 | Diff | % |
|-------------------|--|-------------|-------------|-------------|-------------|
| | | 9043 | 9217 | -174 | -2 % |

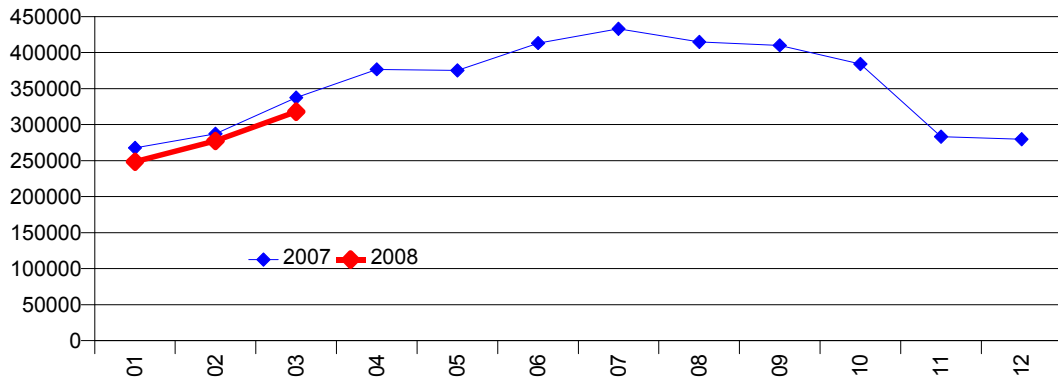
| Kumul./2008 | Cumul 2007 | Diff | % |
|--------------|--------------|------------|------------|
| 25998 | 25711 | 287 | 1 % |

03/2008

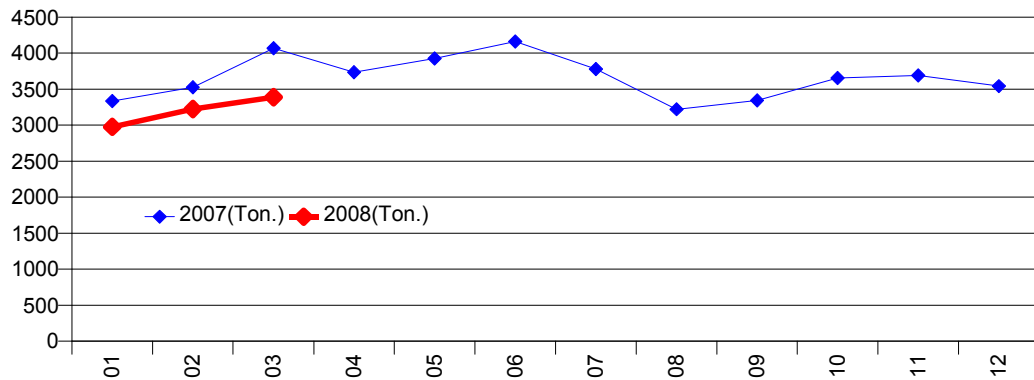
Bewegungen/Mouvements-Total



Passagiere/Passagers-Total



Luftfracht/Fret avionné-Total



LKW Fracht/Fret camionné-Total

